

**PROCESS SOLUTIONS
YOU CAN COUNT ON**

iCoat-5 SERIES

HIGH PRECISION SELECTIVE CONFORMAL COATING MACHINE

Product Description

ANDA's iCoat-5 is a high-speed precision selective conformal coating machine that's designed to deliver the highest quality in accuracy and precision for automated batch or in-line conformal coating processes. Ideal for automating high volume/throughput or high mix low volume (HMLV) coating processes. Suitable for panelized or palletized printed circuit board assemblies (PCBAs) and large area coating applications.

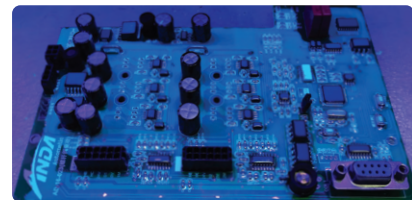
- Running accuracy of ± 0.02 mm (20 μ m) (± 0.0007 ")
- Five axes of movement (X,Y,Z,U rotation) and 35° tilt
- Single head turret design supporting up to three selective conformal coating valves that can be arranged in a variety of different nozzle configurations



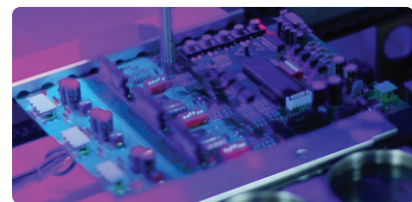
Single head turret (two valves)



Single head turret (three valves)



Precision conformal coating for PCBA's



Selective conformal coating of components and IC pins

ANDA Technologies USA, Inc.
info@anda.us
+1 510 270 8648
47639 Lakeview Boulevard, Fremont, CA 94538, USA



Specifications :

System Specifications

iCoat-5 Series High Precision Selective Conformal Coating Machine

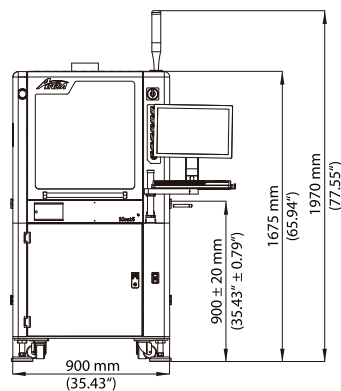
	iCoat-5	iCoat-5L
Board Handling		
Standard Work Area	X 450 mm (17.71") Y 450 mm (17.71") Z 100 mm (3.93")	X 580 mm (22.83") Y 580 mm (22.83") Z 100 mm (3.93")
Min. Conveyor Width	50 mm (1.96")	50 mm (1.96")
Max. Conveyor Width	450 mm (17.71")	580 mm (22.83")
Max. Component Height	± 90 mm (3.54")	
PCB Edge Clearance	≥ 5 mm (≥ 0.19")	
Process Flow	L to R (Standard), R to L (Optional)	
Max. Conveyor Load	4 kg/m (9 lbs) [Standard], 10 kg/m (22 lbs) [Optional] with even distribution	
Max. Conveyor Speed	13 m/min	
Conveyor Height	900 ± 20 mm (35.43" ± 0.79")	
Conveyor Width Adjustment	Motorized	
Operation		
Gantry System	Servo Motors & Ball Screw	
XY Max. Speed	800 mm/s	
XY Acceleration	0.8 g with smooth control	
XYZ Repeatability	± 0.02 mm (±0.0007")	
Valve Configuration	Triple Valves with Front Two Valves Tilt	
Spray Width	2 - 30 mm (0.078" - 1.18")	
Rotation	360° (±180°)	
Tilt	35°	
Facility		
Footprint	L 900 mm (33.43") W 1300 mm (51.18") H 1675 mm (65.94")	L 1010 mm (39.76") W 1360 mm (53.54") H 1675 mm (65.94")
Weight	~570 kg (~1257 lbs)	~580 kg (~1278 lbs)
Min. Air Supply	≥ 0.4 MPa (≥ 60 psi, 4 Bar)	
Exhaust Requirement	15 m ³ /min (500 CFM)	
Input Power	AC 220 V 50/60 Hz	
Rated Power	2.4 kW	
Standard Compliance	SMEMA, IPC, CE	
Interface		
Controller	IPC & KMM	
OS	Windows OS	
Software	Anda Software	
Programming	File Transfer & On-board Programming	

Standard Features

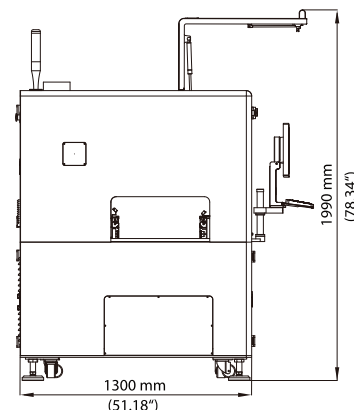
- Steel structure smooth motion platform
- Stainless steel interior
- Hatch door with observation window
- Adjustable height pivoting computer arm
- Fluorescent inspection lighting (UV black light)
- Auto dipping and purging waste collection
- Programmable valve cleaning
- Board presence sensors
- PCB clamping system
- Unlimited program storage
- USB communication ports
- Light tower beacon
- ESD grounding

Optional Features

- CCD visual camera
- Dispense needle calibration sensor
- Inline material metering
- Material changeover (manual)
- Material level detection (low fluid level scale)
- Material tank AMSE certified: 1 / 3 / 5 / 10 gal
- Barcode or 2D code scanner
- Non-contact laser height sensor
- Multi-stage or multi-zone conveyor
- Pre-queue board station
- Return conveyor (underneath)
- Dual lane



Front View



Side View