



**PROCESS SOLUTIONS
YOU CAN COUNT ON**

iCoat-6 SERIES

HIGH PRECISION SELECTIVE CONFORMAL COATING MACHINE
WITH CLOSED LOOP FLUID HEATING SYSTEM

Product Description

ANDA's iCoat-6 is a XYZ gantry system designed specifically for thin film coating applications. This specialized coating system produces exceptional edge definition results without the overspray associated with atomized spray valves. Automatic recirculating closed loop fluid heating provides stable fluid pressure and constant temperature control to maintain the coating process and ensure set fluid viscosity, even during machine suspension.

- Automatic coating detection mounted over conveyor exit or x-axis for verifying coating results
- Laser film fan spray width control monitoring verifies thin film coating parameters
- Rotation fixed 90° using IC-100L thin film valve
- Standard dual valve configuration with fixed width



Closed loop fluid heating system



Thin film valve achieving clear spraying boundary

ANDA Technologies USA, Inc.
info@anda.us
+1 510 270 8648
47639 Lakeview Boulevard, Fremont, CA 94538, USA



Specifications :

System Specifications

iCoat-6
High Precision Selective Conformal Coating Machine
with Closed Loop Fluid Heating System

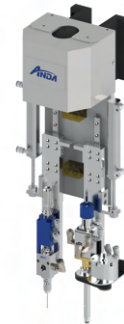
| Board Handling | |
|---------------------------|--|
| Standard Work Area | X 360 mm (14.17") Y 450 mm (17.71") Z 100 mm (3.93") |
| Min. Conveyor Width | 50 mm (1.96") |
| Max. Conveyor Width | 450 mm (17.71") |
| Max. Component Height | ± 90 mm (3.54") |
| PCB Edge Clearance | ≥ 5 mm (≥ 0.19") |
| Process Flow | L to R (Standard), R to L (Optional) |
| Max. Conveyor Load | 4 kg/m (9 lbs) [Standard], 10 kg/m (22 lbs) [Optional] with even distribution |
| Max. Conveyor Speed | 13 m/min |
| Conveyor Height | 900 ± 20 mm (35.43" ± 0.79") |
| Conveyor Width Adjustment | Motorized |
| Operation | |
| Gantry System | Servo Motors & Ball Screw |
| XY Max. Speed | 800 mm/s |
| XY Acceleration | 0.8 g with smooth control |
| XYZ Repeatability | ± 0.02 mm (±0.0007") |
| Valve Configuration | Dual valves with fixed spacing |
| Spray Width | 2 - 19 mm (0.078" - 0.74") |
| Facility | |
| Footprint | L 900 mm (33.43") W 1300 mm (51.18") H 1675 mm (65.94") |
| Weight | ~560 kg (~1234 lbs) |
| Min. Air Supply | 0.4 MPa (60 psi, 4 Bar) |
| Exhaust Requirement | 15 m ³ /min (500 CFM) |
| Input Power | AC 220 V 50/60 Hz |
| Rated Power | 2.4 kW |
| Standard Compliance | SMEEMA, IPC, CE |
| Interface | |
| Controller | IPC & KMM |
| OS | Windows OS |
| Software | Anda Software |
| Programming | File Transfer & On-board Programming |

Standard Features

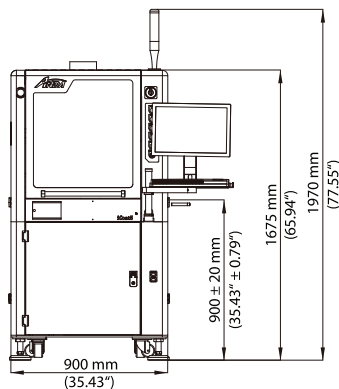
- Steel structure smooth motion platform
- Stainless steel interior
- Hatch door with observation window
- Adjustable height pivoting computer arm
- Fluorescent inspection lighting (UV black light)
- Auto dipping and purging waste collection
- CCD vision camera
- PCB clamping system
- Material level detection
- Material heating circulation system
- Material filtration system
- Low pressure fluid automatic adjustment system
- Film width laser checking system
- Diaphragm pump feeding system
- Light tower beacon
- ESD grounding

Optional Features

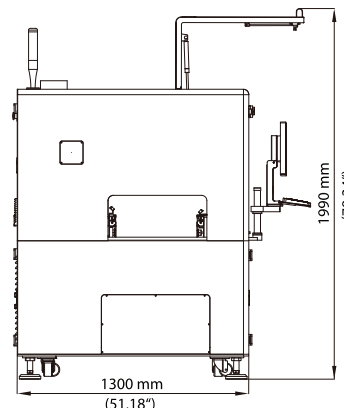
- Larger work area X: 490 mm Y: 580 mm
- Barcode or 2D code scanner
- UPS and voltage stabilizer
- Material tank AMSE certified: 1 / 3 / 5 / 10 gal
- Non-contact laser height sensor
- Multi-stage or multi-zone conveyor
- Pre-queue board station
- Return conveyor (underneath)
- Dual lane



Dual-valve system with needle & thin film valves



Front View



Side View