

VALVES



**PROCESS SOLUTIONS
YOU CAN COUNT ON**

DISPENSING VALVES

Product Description

Jet-8600 | Pneumatic Jetting Valve (Non-Contact)

The Jet-8600 is a contactless jetting valve suitable for a wide range of fluid and adhesive dispensing applications which require high-speed precision with strict deposit tolerances. Fluid is dispensed onto substrates at speeds up to 200 Hz (dots per second) including assemblies with tight spaces without risk of collision because Z-axis is not required for jetting.

PV-20 | Piezoelectric Jetting Valve (Non-Contact)

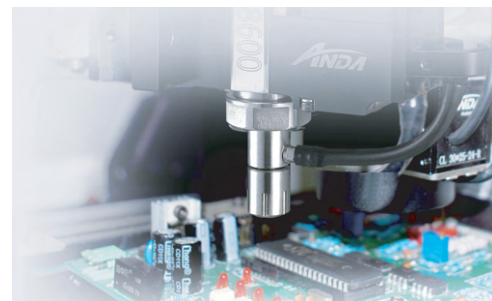
The PV-20 is a high-speed precision contactless jetting valve designed for micro dispensing applications. Minimum dot size 0.2 mm, suitable for micro dispensing low to medium viscosity materials onto flexible printed circuit (FPC) and printed circuit board (PCB) assemblies requiring high-speed precision dispensing with strict deposit tolerances. Constant process control of dispensed materials at temperatures up to 150°C with dispensing speeds up to 1000 Hz (dots per second).

SV-06 | Screw Valve

The SV-06 is designed for precise repeatable dispensing of solder pastes and other medium to high viscosity materials. Equipped with a quick release lure lock design, allowing it to with various needle sizes and multiple fluid types. A variety of auger screw pitch options are available to achieve faster flow or higher material precision deposits.

PC-1000 / 2000 | Progressive Cavity Pump 1k or 2k Volume Valves



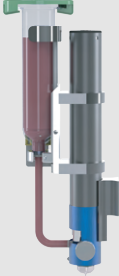

The PC1000 & PC2000 are specialized screw valves which dispense one-component (1K) or two-component (2K) materials with complete pressure-tight performance utilizing a specialized rotor-stator system. Controlled rotary motion gently dispenses material mediums without affecting structural performance through a displacement process which occurs in the stator, zero external forces are applied. Reverse flow material suck-back ensures controlled stop improving quality in dispensing results and provides mess-free easy maintenance.



ANDA Technologies USA, Inc.
info@anda.us
+1 510 270 8648
47639 Lakeview Boulevard, Fremont, CA 94538, USA



Specifications :

Dispensing Valve				
Model	JET-8600	PV-20	SV-06	PC-1000 / 2000
Type	Pneumatic Jetting Valve	Piezoelectric Jetting Valve	Screw Valve	Progressive Cavity Pump
Dimensions	50 x 180 x 150 mm (2 x 7 x 5.9 in)	29 x 98 x 113 mm (1.2 x 3.9 x 4.5 in)	57 x 109 x 278 mm (2.2 x 4.3 x 11 in)	33 x 33 x 246 mm 58 x 29 x 256 mm
Weight	685 g	500 g	320 g	390 g / 1100 g
Operating Pressure	≥ 0.6 MPa	-	-	-
Max. Fluid Pressure	0.3 MPa	0.3 MPa	0.4 MPa	0.6 MPa
Max. Operating Frequency	200 Hz	1000 Hz	-	-
Min. Dispensing Diameter or Volume	0.2 mm (0.007")	0.2 mm (0.007")	0.05 µL	0.004 ml / 0.01 ml
Flow Rate Range	-	-	1.38 - 160 µL/min	0.01 - 6 ml/min 0.2 - 12 ml/min
Max. Viscosity Range	250,000 cPs	500,000 cPs	1,000,000 cPs	250,000 cPs
Max. Heating Temperature	80°C	150°C	-	-
Applications	<ul style="list-style-type: none"> - Chip Package - Underfill - Pin Encapsulation - Dam & Fill - Edge Bonding & Encapsulation - Micro Coating 	<ul style="list-style-type: none"> - Chip Package - Underfill - Pin Encapsulation - Dam & Fill - Edge Bonding & Encapsulation - Micro Coating 	<ul style="list-style-type: none"> - Solder Pastes - Damping Greases - Pin Encapsulation - Dam & Fill - Thermal Conductive - Adhesives 	<ul style="list-style-type: none"> - Underfill - Pin Encapsulation - Dam & Fill - Metering - Ratio Mixing - Edge Bonding & Encapsulation
Features & Benefits	<ul style="list-style-type: none"> - High-precision dispensing at 0.01mg - Nozzle can be disassembled independently for fast and simple maintenance - Equipped with nozzle heating ring to achieve applications of different adhesive materials 	<ul style="list-style-type: none"> - High-precision dispensing at 0.002mg - Piezoelectric jetting structure design has advantages of small stroke and strong jet force which can avoid the occurrence of bubbles and splattering - Built-in heater to ensure material viscosity and dispense consistency 	<ul style="list-style-type: none"> - Accurate repeatability and precise dispensing - Adjustable flow rate is controlled with micro servo transmission precisely - Wet path module can be removed without using tools for fast and simple maintenance - Flexible syringe option sizes 5cc~150cc 	<ul style="list-style-type: none"> - Non-thimble structure has no impact on the fluid - Stable dispensing flow without pulsing - Micro servo transmission controls the flow precisely - Adjustable suck-back function can avoid the string and tailing - Materials mixing ratio 1:1 to 1:10